

WILMINGTON DISTRICT: WHAT'S NEW ON THE COAST

Robert (Bob) W. Keistler, P.E.
Civil Programs & Project Branch

NCBIWA 2024 Spring Meeting
09 May 2024



U.S. ARMY
of Engineers®





U.S. ARMY

WHAT'S NEW WITH THE CORPS ON THE COAST

2

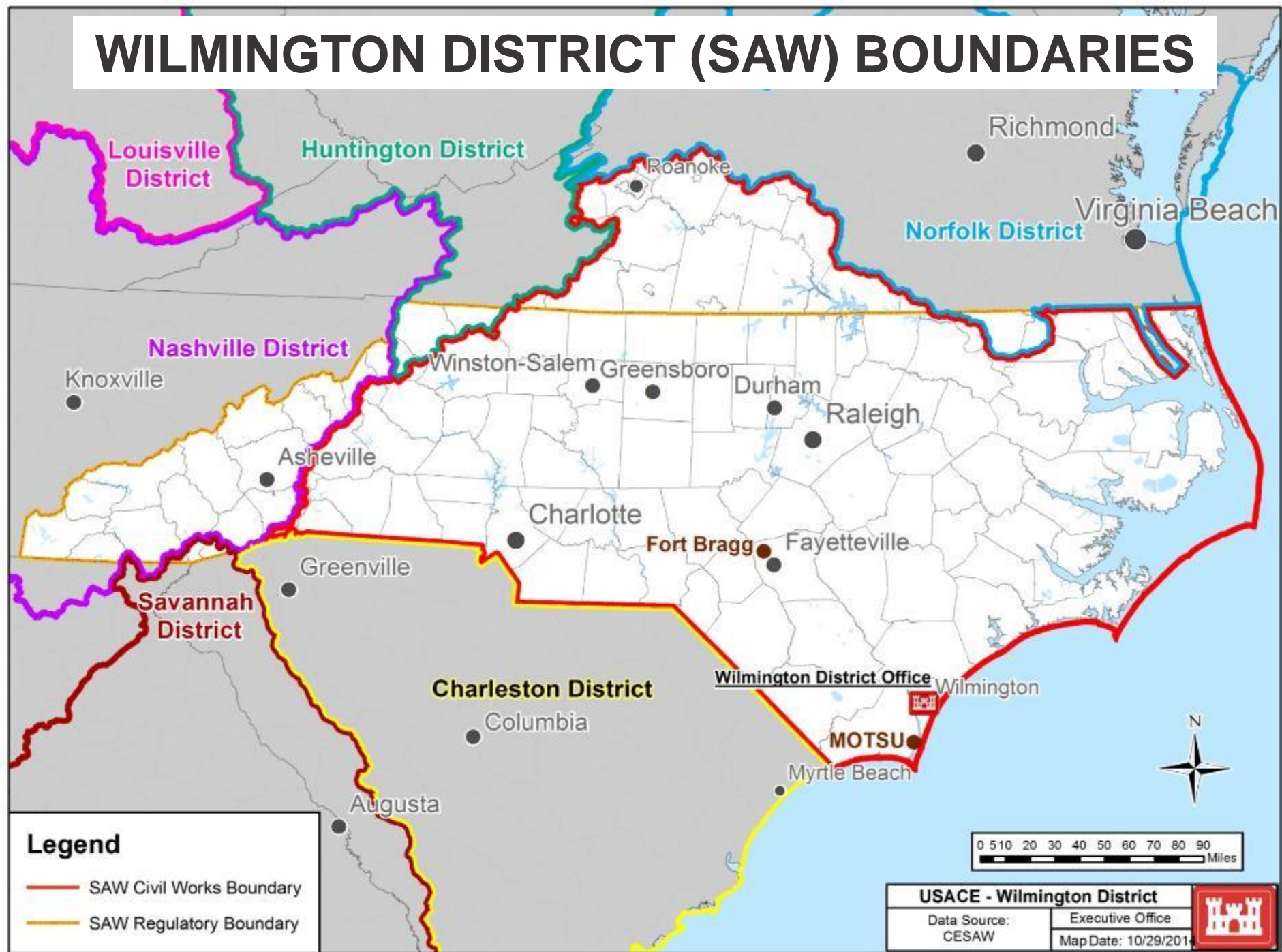


- Opening Remarks / USACE Info
- Wilmington Harbor Section 403 Project
- SAW Coastal Storm Risk Management (CSRMM) Program
- SAW Coastal Navigation Program
- National Shallow Draft Fleet



U.S. ARMY

WILMINGTON DISTRICT (SAW) BOUNDARIES



Legend

- SAW Civil Works Boundary
- SAW Regulatory Boundary



USACE - Wilmington District

Data Source: CESAW	Executive Office Map Date: 10/29/2014
-----------------------	--





U.S. ARMY

Funding Related Information



- The U.S. Army Corps of Engineers (Corps) is an Executive Branch agency within the Department of Defense.
- The Corps is a “Project” Funded Organization.
- Corps Civil Works Projects (Authorization vs. Appropriation)
- Civil Works Appropriations (Types of Funding / Color of Money)
 - Investigations
 - Construction
 - Operation & Maintenance
 - Regulatory
- Fiscal Year for the Federal Government Oct 1 to Sept 30
- Timing of Funding

**WILMINGTON DISTRICT:
WILMINGTON HARBOR SECTION 403**



U.S. ARMY



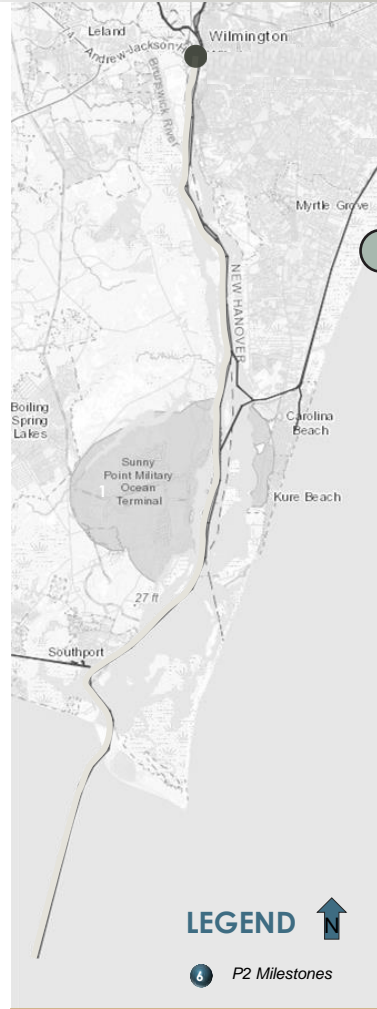
**US Army Corps
of Engineers®**





U.S. ARMY

WILMINGTON HARBOR (403) SCHEDULE OVERVIEW



LEGEND ↑

6 P2 Milestones

MISSION STATEMENT

Wilmington District is conducting an evaluation of technical and policy concerns noted in the ASA(CW)'s May 2020 Review Assessment of the North Carolina State Ports Authority's (NCSPA) February 2020 WRDA 203 Feasibility Study which resulted in conditional authorization in Sec. 403 of WRDA 2020 of deepening the main channel to 47' from the current 42'.

FY 23 CSA, CONTRACTS, EARLY SCOPING, & ECONOMICS

OCT - DEC 2022

Project Development Team

- 1 **Cost Share Agreement (OCT 24)**
 - Funding
 - Scheduling
 - Economics
 - Contract Coordination

JAN - SEP 2023

- Econ - FWOP
- Withdraw NOI
- Climate Change Analysis
- Sea Level Rise
- Coastal EN & ENV Contract Award
- Vibracore Contract Award
- EN Quantities & Materials
- Initial CSRA
- Communication Plan
- Review Plan
- Cost Engineering for Array of Alternatives
- Plan Formulation Screening
- Econ -Future With Project
- Avg Annual Benefits & Cost

FY 24 ALTERNATIVE ANALYSIS

- Vibracore
- **Notice of Intent (May-July 2024)**
- Final Quantities/ Materials
- Groundwater Modeling
- Geotech Appendix
- Water Quality
- Biological Assessments
- Environmental Justice Analysis
- HSI Modeling
- Water Quality
- Suspended Sediments
- Hydrodynamic, WQ & Sediment model runs
- Wave Transformation
- Shoreline Impacts
- Tide Range
- Vessel Wake Modeling
- Channel Morphology

FY 25 ENVIRONMENTAL IMPACT STATEMENT (EIS)

- 2 **Notice of Intent (OCT-24)**
 - Delft 3D Model Bathymetry
 - Mitigation Plans
 - Real Estate Assessments
 - Update AAEQ Benefits
 - Economic Report

FY 26 FINAL REPORT

- 3 **Public Review (OCT 25)**
 - Revise draft EIS based on Public feedback
 - ATR/IEPR Review Initiated
 - Cost Certification Post Review (DEC)
- 4 **Final EIS & Report (APR 26)**
- 5 **MSC Report Endorsement (JUL 26)**
 - After Action Review

FY 27 RECORD OF DECISION

- 6 **Record of Decision**

TIMELINE (Federal Fiscal Year)



WILMINGTON DISTRICT:

COASTAL STORM RISK MANAGEMENT (CSRM) PROGRAM



U.S. ARMY

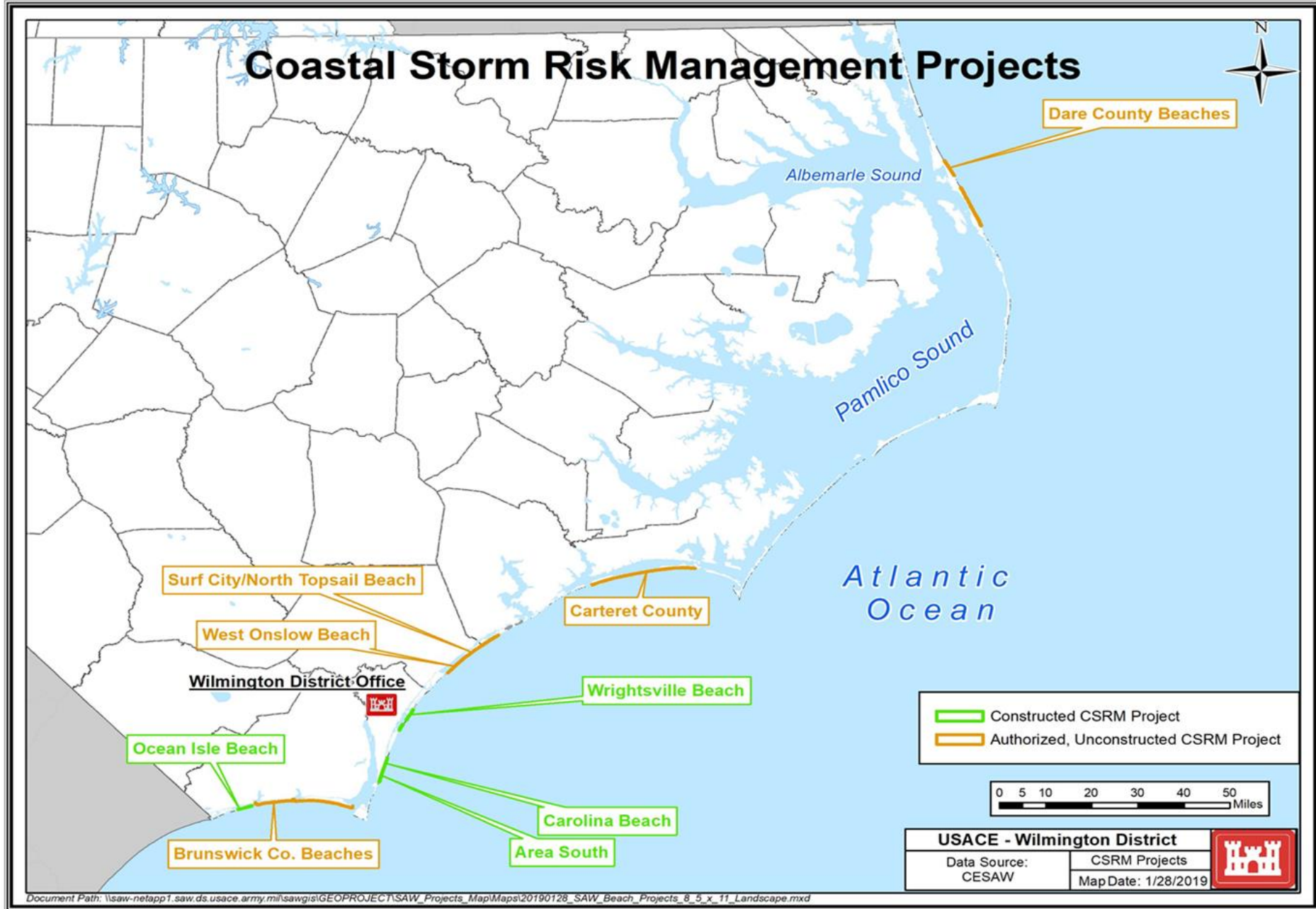


US Army Corps
of Engineers®





U.S. ARMY





U.S. ARMY

COASTAL STORM RISK MANAGEMENT (CSRM) PROJECTS



9

- **Investigation Phase**

- Brunswick County Beaches (Holden Beach Portion) General Reevaluation Report (GRR)
 - Tentatively Selected Plan (TSP) Milestone – March 2025
 - Signed Chief's Report – Summer 2026
- Brunswick County Beaches (Oak Island Portion) General Reevaluation Report (GRR)
 - Alternative Milestone Meeting (AMM) Milestone – Held 07 March 2024
 - Signed Chief's Report – Fall 2027

- **Construction Phase**

- Initial Construction
 - Surf City, NC CSRM Contract
 - Working for an amended project authorization and a contract award for initial construction in FY25.
- Scheduled Renourishment Cycles
 - FY-24 Wrightsville Beach, NC CSRM Contract
 - Contract completed by Marinex Construction, Inc. in March 2024.
 - FY-25 Carolina Beach & Vicinity, NC CSRM Contract
 - Solicitation and contract award scheduled by September (2024) with sand placement to occur in the next environmental window (Nov 2024 – Apr 2025)
 - Brunswick County Beaches (Ocean Isle Beach Portion) CSRM Contract
 - If needed, the next renourishment cycle is scheduled for FY-26.

9



U.S. ARMY

WRIGHTSVILLE BEACH, CSRM PROJECT



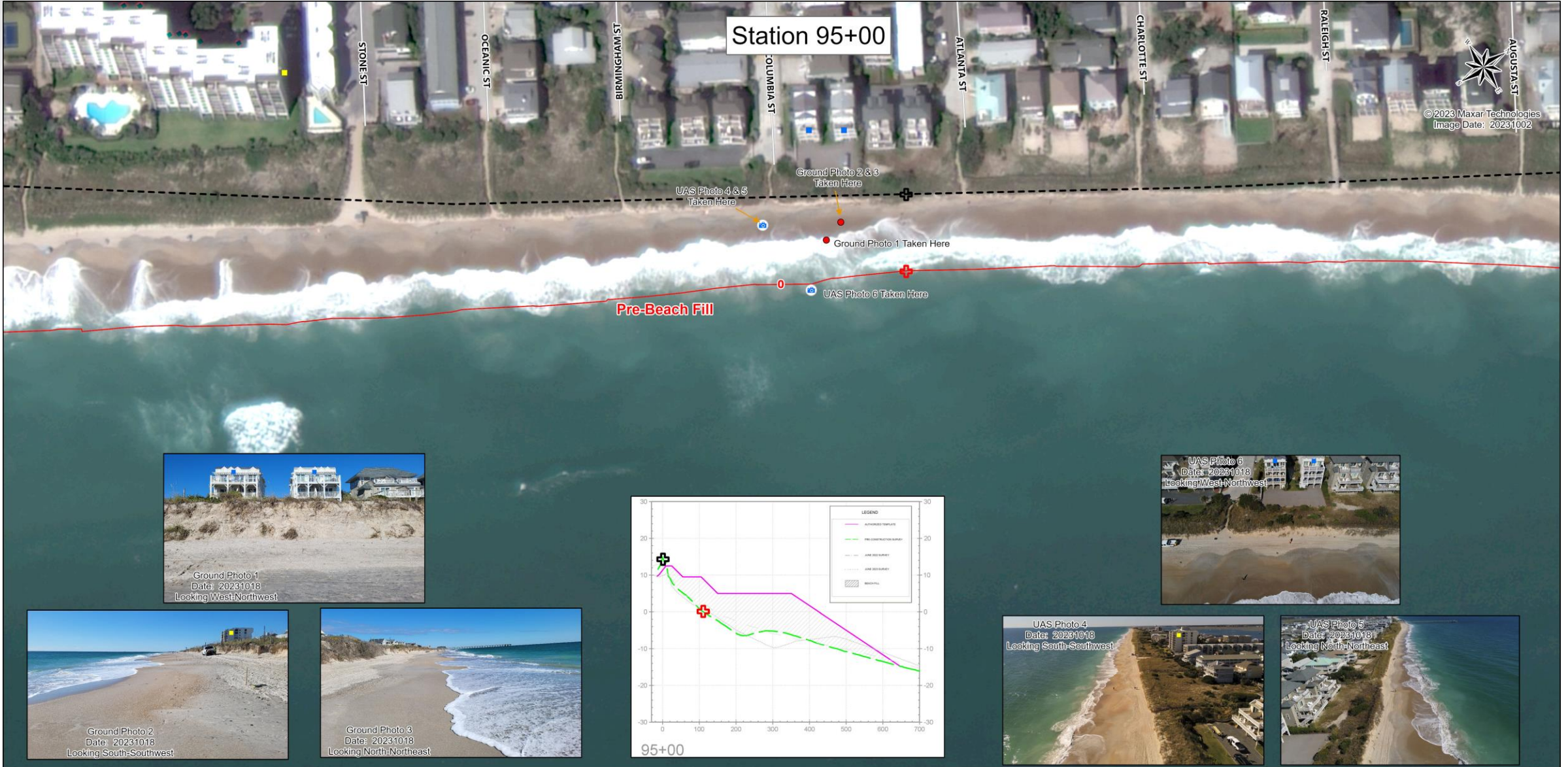
Wrightsville Beach Coastal Storm Risk Management Project 2023
After Construction - Satellite Image Date: March 18, 2024





U.S. ARMY

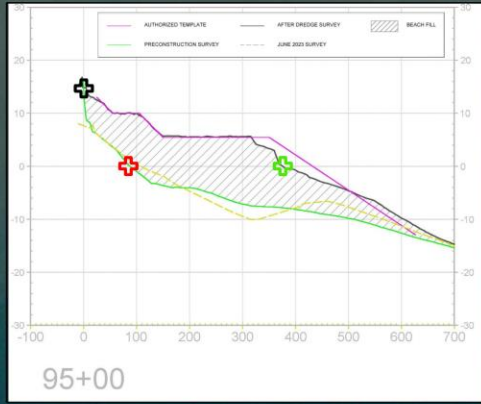
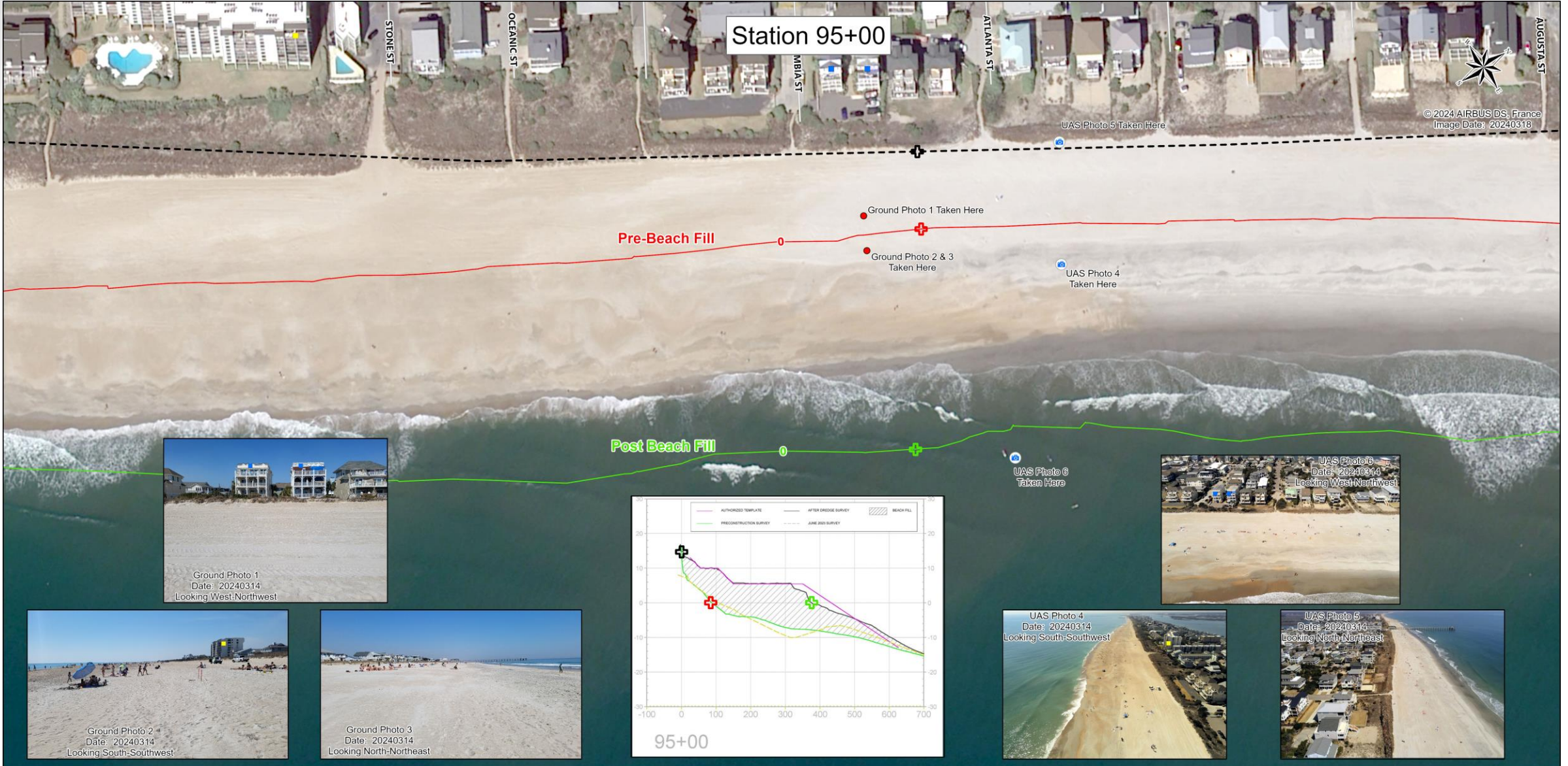
WRIGHTSVILLE BEACH, NC CSRМ PROJECT (PRE-PLACEMENT)





U.S. ARMY

WRIGHTSVILLE BEACH, NC CSRSM PROJECT (POST-PLACEMENT)



WILMINGTON DISTRICT: COASTAL NAVIGATION PROGRAM



U.S. ARMY



US Army Corps
of Engineers®

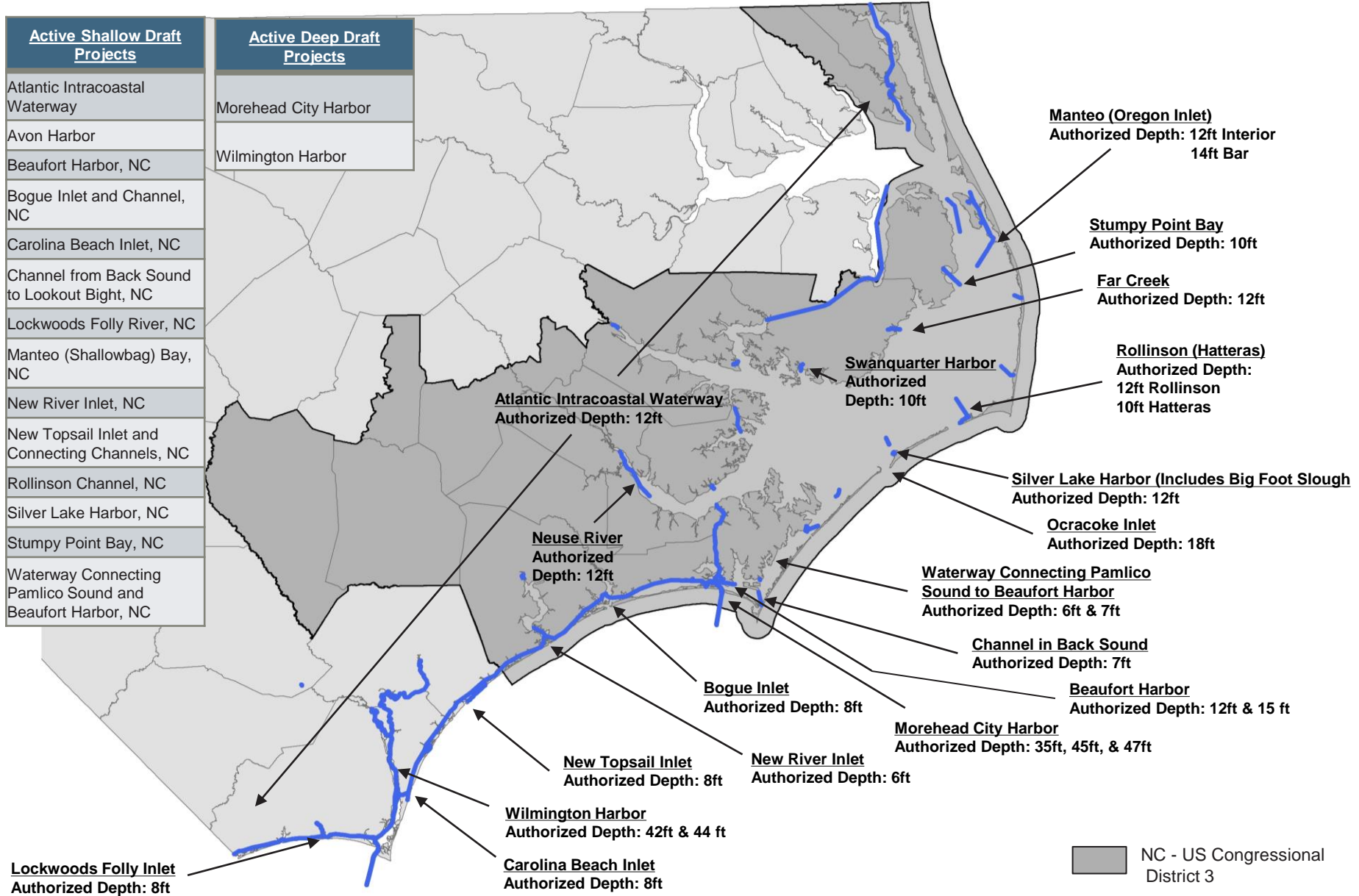




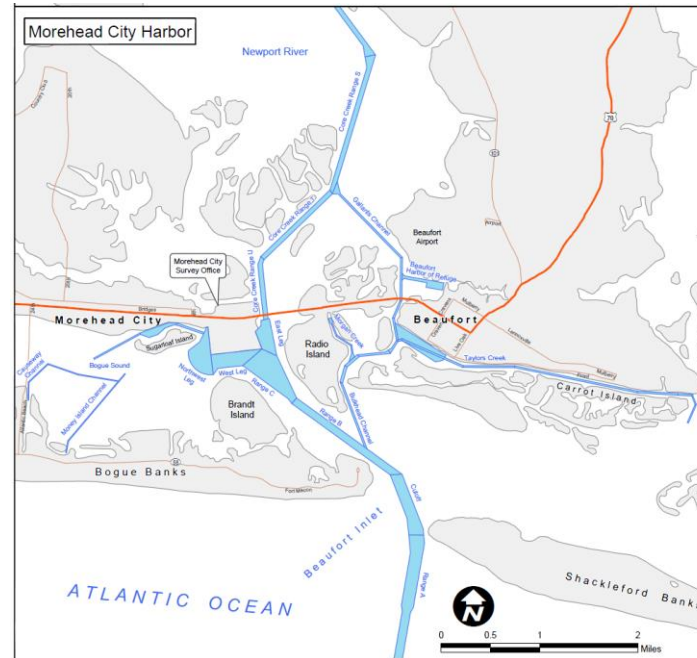
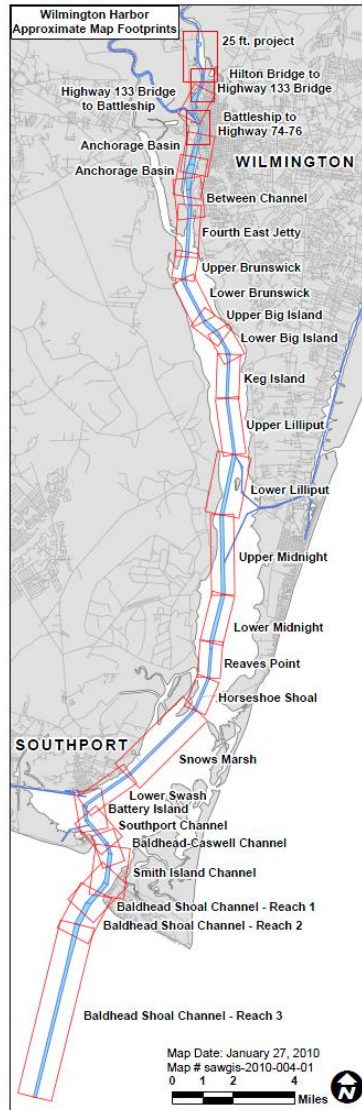
U.S. ARMY



WILMINGTON DISTRICT NAVIGATION CHANNELS



WILMINGTON DISTRICT DEEP DRAFT PORTS



Wilmington Harbor

- Authorized Depth:
 - Ocean Bar: 44 feet
 - To Bridge: 42 feet
 - Past Bridge: 32 to 25 feet
- Tonnage: 7 million
- National Rank: 62

Morehead City Harbor

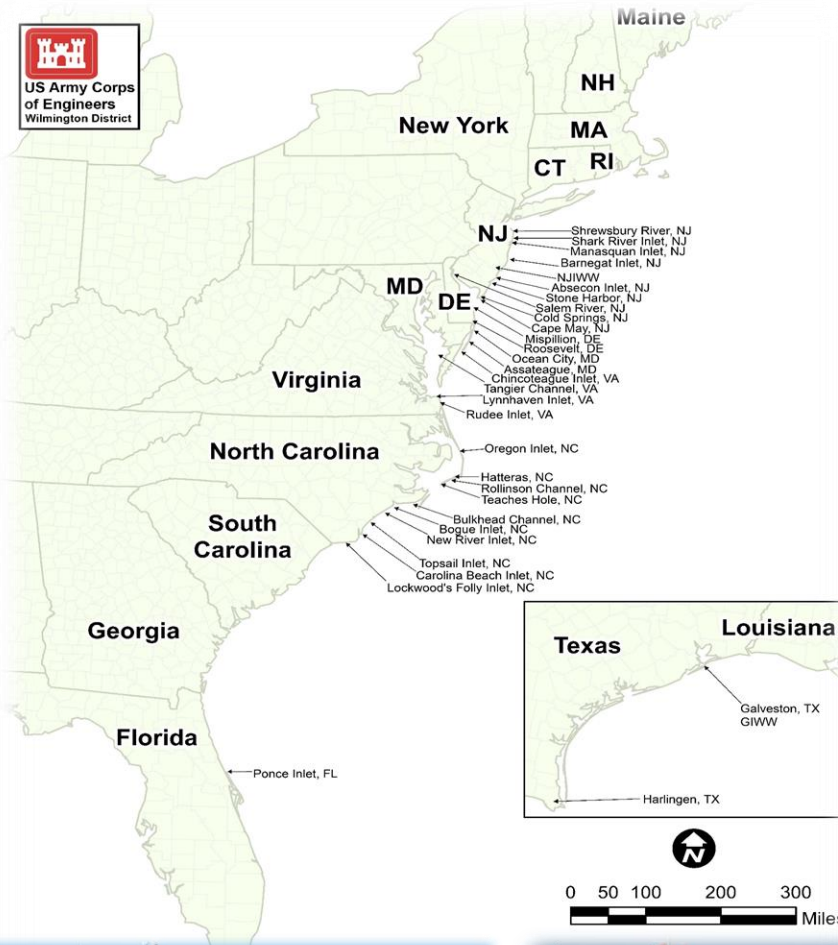
- Authorized Depth:
 - Range A: 47 feet
 - Cutoff Channel: 45 feet
 - Range B & C: 45 feet
 - Inner Harbor: 45 feet & 35 feet
- Tonnage: 2.3 million
- National Rank: 108



U.S. ARMY



NATIONAL SHALLOW DRAFT FLEET



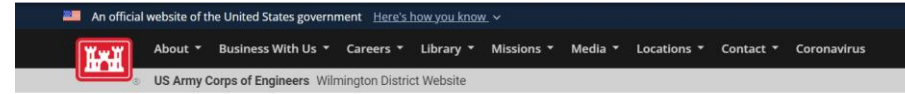
- Only shallow draft fleet in USACE
- Limited industry equivalent
- National asset on Atlantic & Gulf Coast
- 34 Different projects in 2023 which encompassed 6 Districts and 3 MSCs



WILMINGTON DISTRICT NAVIGATION WEBPAGE



- Hydrographic Survey Maps
- Public Notices
- Channel Setback Policy
- Placement Area Usage
- No Wake Zones
- Land Exchanges / Trades
- Google Earth channel files



Missions / Navigation / Hydrographic Surveys

Hydrographic Surveys

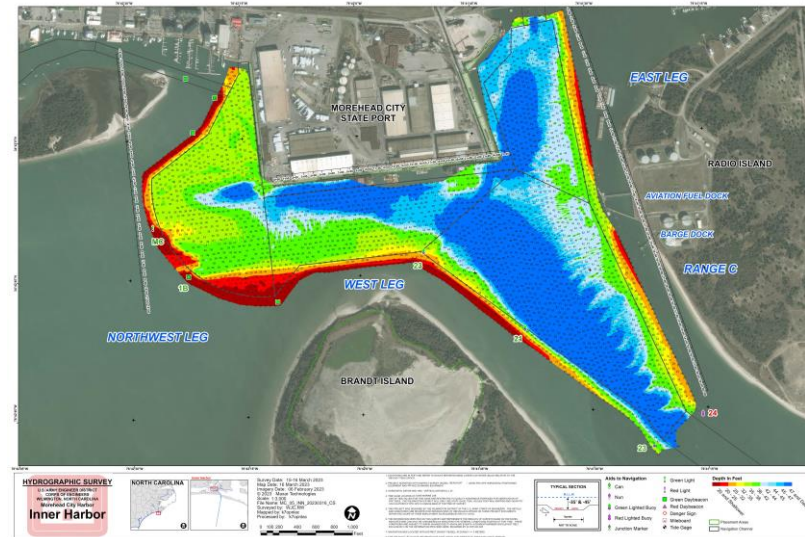
- Atlantic Intracoastal Waterway
- Coastal Inlets & Crossings
- Manteo & Oregon Inlet
- Morehead City & Beaufort Harbors
- River Projects
- Ferry & Side Channels / Small Harbors
- Wilmington Harbor

About Hydrographic Surveys



Maps available at the links below are viewable in order to provide boaters and other users with more than the standard hydrographic survey maps. The hydrographic survey data for each project. Date

NOTE: The condition surveys depicted on these drawings were published by National Ocean Service, U.S. Coast and Geodetic Survey. The soundings on these drawings are not intended to be used for



<https://www.saw.usace.army.mil/missions/navigation/>



U.S. ARMY



Wilmington District Points of Contact (POCs)

Robert (Bob) W. Keistler, P.E.
Chief, Civil Programs & Project Branch
robert.w.keistler@usace.army.mil
(910) 251-4709

James (Todd) T. Horton
Chief, Navigation Branch
james.t.horton@usace.army.mil
(910) 251-4067

Wilmington District Navigation Webpage:
<https://www.saw.usace.army.mil/missions/navigation/>